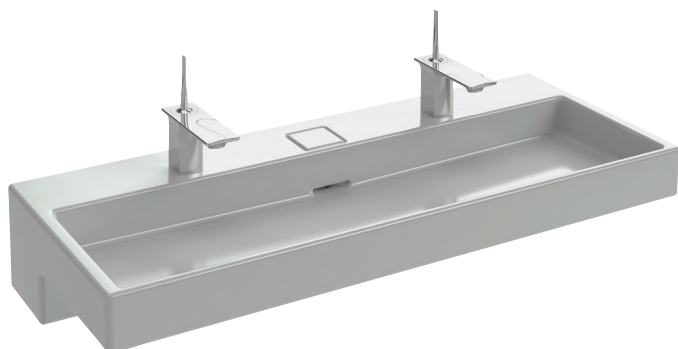


### 2-holes double-basin vanity top 120 x 49 cm

# XB9112K



**Collection:** TERRACE

**Finish\*:**



**Main features:**



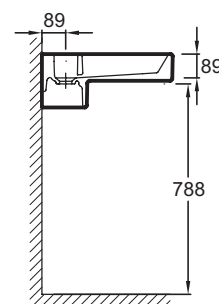
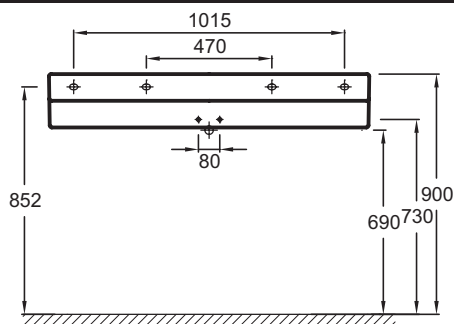
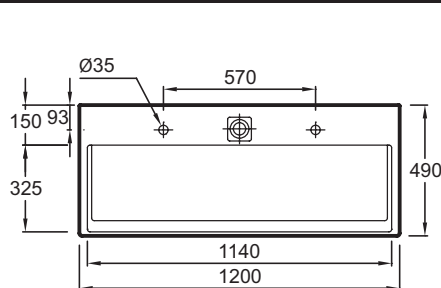
## Features

- **Dimensions:** 120 x 49
- **Material:** Ceramic
- **Faucet drilling:** 2 faucet holes
- Geometrically-inspired L-shaped vanity top provides a functional design element
- **Weight:** 37.2 kg
- **Installation:** Self-supporting or can be mounted on a specific cabinet
- With LED strip lighting (230 V/12V, energy efficiency class A++)
- Innovative concealed drain system patented by Kohler

## Optional products

- E78291: Design bottle trap 1 1/4" - long version
- 8069RK: Tall side unit right hinges, 150 cm
- 8069LK: Tall side unit left hinges, 150 cm
- EB1183: Mirror 120 cm
- EB1188: Base unit 120 cm
- 98942D: Premium aluminium mirrored cabinet 120 cm
- DA102K: Wall-hung WC pan 55 x 38 cm
- MA0002K: Wall-hung bidet 55 x 38 cm
- E4916: Tray for vanity top
- E4906: Towel rail, left
- E4905: Towel rail, right

## Technical drawing



Product Specification: 2-holes double-basin vanity top 120 x 49 cm. XB9112K. Collection: TERRACE. Dimensions: 120 x 49. Weight: 37.2 kg. Material: Ceramic. Installation: Self-supporting or can be mounted on a specific cabinet. Faucet drilling: 2 faucet holes. With LED strip lighting (230 V/12V, energy efficiency class A++). Geometrically-inspired L-shaped vanity top provides a functional design element. Innovative concealed drain system patented by Kohler.